

Location: Deschutes County

Property Types: All Residential Prop - All Property Statuses - All Lot Sizes

Price Range: \$0 - No Limit

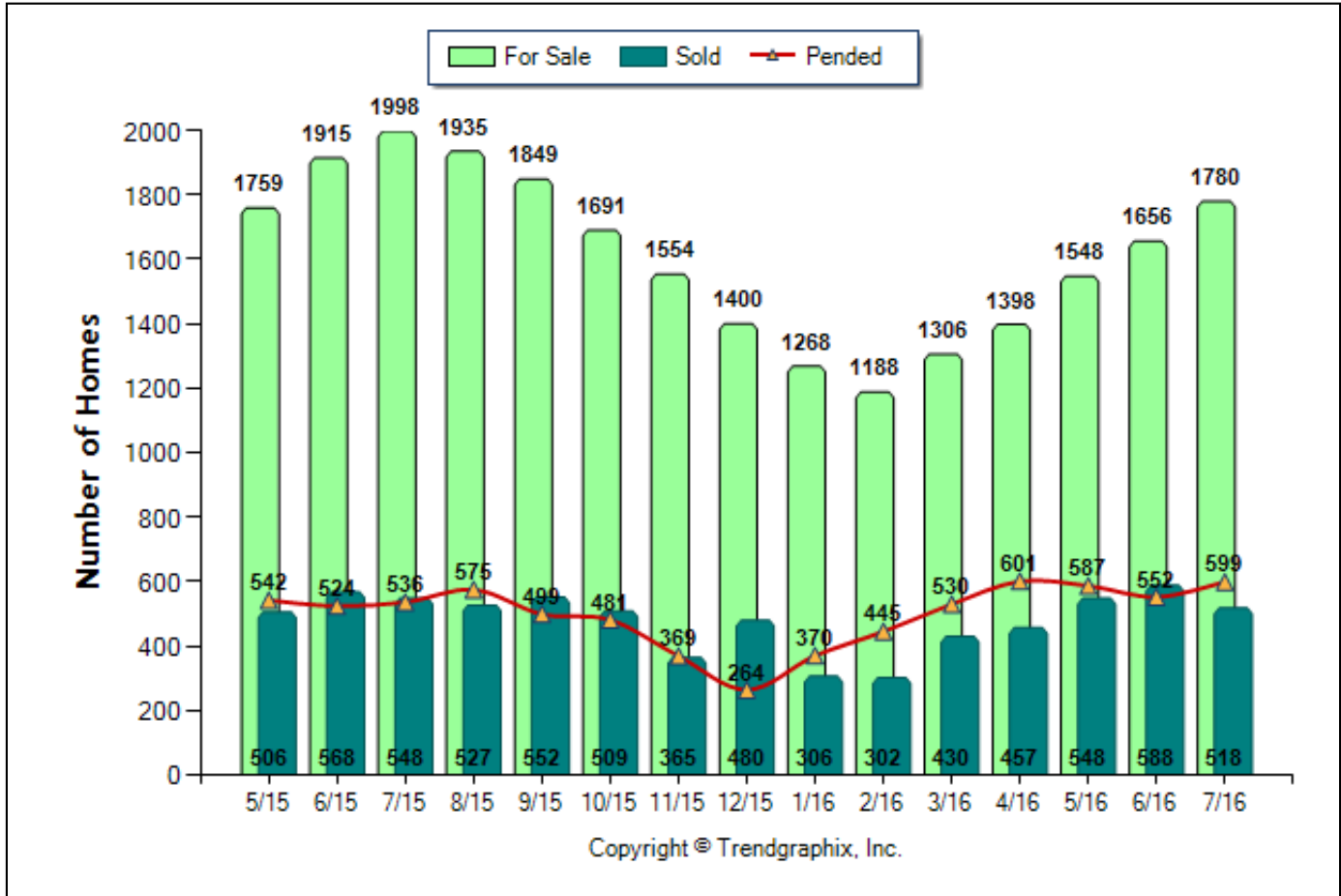
SQFT Range: 0 - No Limit

Bedrooms: 0 - No Limit

Baths: 0 - No Limit

Year Built: 0 - No Limit

Number of Homes For Sale vs. Sold vs. Pended (May. 2015 - Jul. 2016)



	Curnt vs. Prev Month			Curnt vs. Same Month 1 Yr Ago			Curnt vs. Same Qtr 1 Yr Ago		
	Jul. 16	Jun. 16	% Change	Jul. 16	Jul. 15	% Change	May. 16 to Jul. 16	May. 15 to Jul. 15	% Change
For Sale	1780	1656	7.5% ▲	1780	1998	-10.9% ▼	4984	5672	-12.1% ▼
Sold	518	588	-11.9% ▼	518	548	-5.5% ▼	1654	1622	2% ▲
Pended	599	552	8.5% ▲	599	536	11.8% ▲	1738	1602	8.5% ▲

Date	5/15	6/15	7/15	8/15	9/15	10/15	11/15	12/15	1/16	2/16	3/16	4/16	5/16	6/16	7/16
For Sale	1759	1915	1998	1935	1849	1691	1554	1400	1268	1188	1306	1398	1548	1656	1780
New Listing	735	772	758	646	547	471	361	286	403	452	709	765	781	796	707
Sold	506	568	548	527	552	509	365	480	306	302	430	457	548	588	518
Pended	542	524	536	575	499	481	369	264	370	445	530	601	587	552	599
Months of Inventory (Closed Sales)	3.5	3.4	3.6	3.7	3.3	3.3	4.3	2.9	4.1	3.9	3	3.1	2.8	2.8	3.4
Months of Inventory (Pended Sales)	3.2	3.7	3.7	3.4	3.7	3.5	4.2	5.3	3.4	2.7	2.5	2.3	2.6	3	3
Absorption Rate (Closed Sales) %	28.8	29.7	27.4	27.2	29.9	30.1	23.5	34.3	24.1	25.4	32.9	32.7	35.4	35.5	29.1
Absorption Rate (Pended Sales) %	30.8	27.4	26.8	29.7	27	28.4	23.7	18.9	29.2	37.5	40.6	43	37.9	33.3	33.7
Avg. Active Price	509	513	520	523	531	550	537	535	548	561	551	557	564	582	585
Avg. Sold Price	336	348	350	341	342	354	340	350	351	342	366	369	383	393	377
Avg. Sq. Ft. Price (Sold)	172	178	181	183	183	183	181	181	184	186	186	194	198	204	198
Sold/List Diff. %	99	98	98	98	98	98	98	98	98	98	98	99	99	98	99
Sold/Orig LP Diff. %	97	96	97	97	96	95	95	94	96	96	96	97	97	97	97
Days on Market	114	118	112	111	122	126	129	143	141	135	136	132	117	114	107
Median	289	287	295	296	299	300	295	295	293	283	307	324	325	320	334

All reports are published August 2016, based on data available at the end of July 2016. All reports presented are based on data supplied by the Central Oregon MLS. Neither the Association nor its MLS guarantees or is in anyway responsible for its accuracy. Data maintained by the Association or its MLS may not reflect all real estate activities in the market. Information deemed reliable but not guaranteed.

Location: Deschutes County

Property Types: All Residential Prop - All Property Statuses - All Lot Sizes

Price Range: \$0 - No Limit

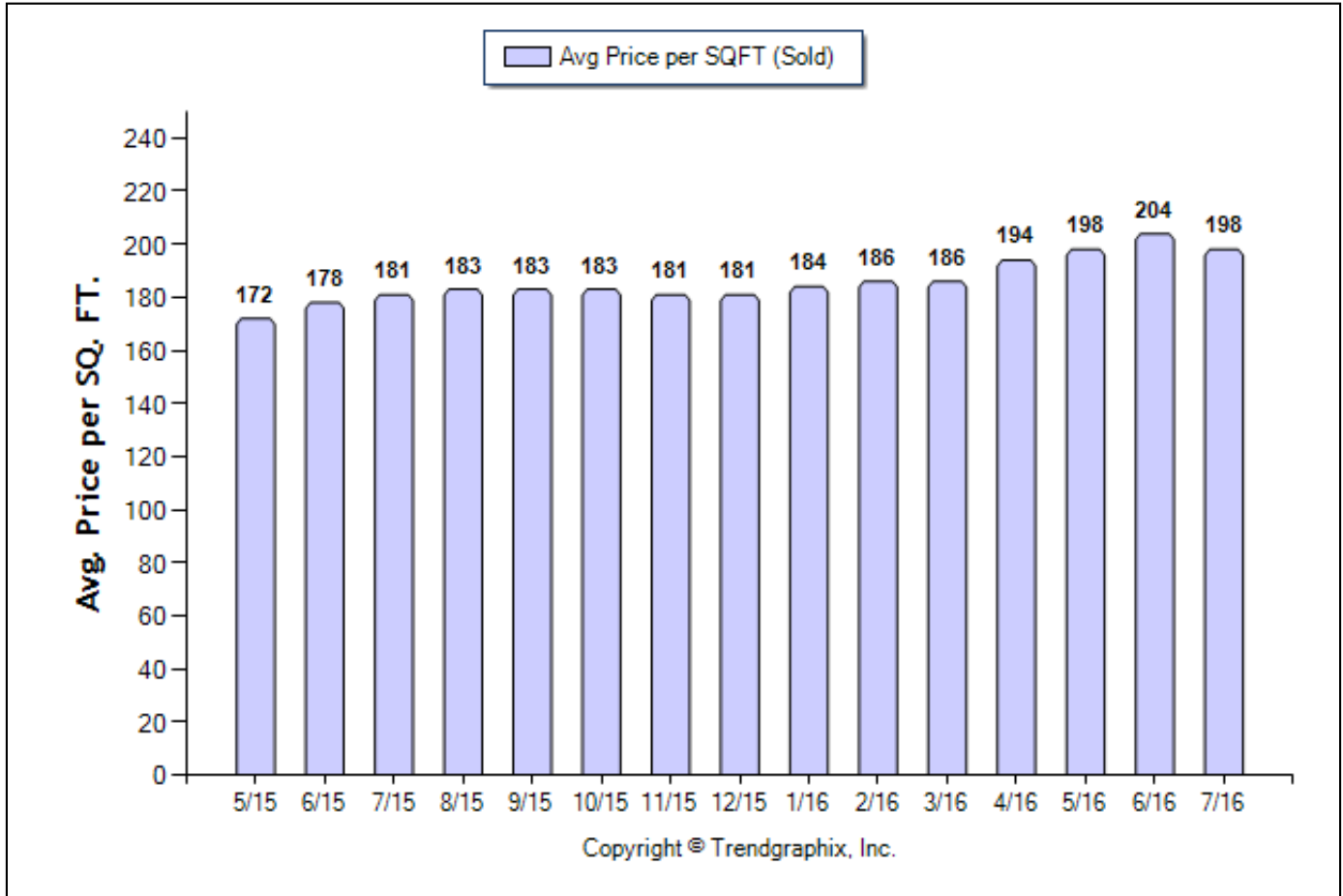
SQFT Range: 0 - No Limit

Bedrooms: 0 - No Limit

Baths: 0 - No Limit

Year Built: 0 - No Limit

Average Price per SQFT (Sold) (May. 2015 - Jul. 2016)



	Curnt vs. Prev Month			Curnt vs. Same Month 1 Yr Ago			Curnt vs. Same Qtr 1 Yr Ago		
	Jul. 16	Jun. 16	% Change	Jul. 16	Jul. 15	% Change	May. 16 to Jul. 16	May. 15 to Jul. 15	% Change
Avg. Sq. Ft. Price (Sold)	198	204	-2.9% ▼	198	181	9.4% ▲	200.13	177.14	13% ▲

Date	5/15	6/15	7/15	8/15	9/15	10/15	11/15	12/15	1/16	2/16	3/16	4/16	5/16	6/16	7/16
For Sale	1759	1915	1998	1935	1849	1691	1554	1400	1268	1188	1306	1398	1548	1656	1780
New Listing	735	772	758	646	547	471	361	286	403	452	709	765	781	796	707
Sold	506	568	548	527	552	509	365	480	306	302	430	457	548	588	518
Pended	542	524	536	575	499	481	369	264	370	445	530	601	587	552	599
Months of Inventory (Closed Sales)	3.5	3.4	3.6	3.7	3.3	3.3	4.3	2.9	4.1	3.9	3	3.1	2.8	2.8	3.4
Months of Inventory (Pended Sales)	3.2	3.7	3.7	3.4	3.7	3.5	4.2	5.3	3.4	2.7	2.5	2.3	2.6	3	3
Absorption Rate (Closed Sales) %	28.8	29.7	27.4	27.2	29.9	30.1	23.5	34.3	24.1	25.4	32.9	32.7	35.4	35.5	29.1
Absorption Rate (Pended Sales) %	30.8	27.4	26.8	29.7	27	28.4	23.7	18.9	29.2	37.5	40.6	43	37.9	33.3	33.7
Avg. Active Price	509	513	520	523	531	550	537	535	548	561	551	557	564	582	585
Avg. Sold Price	336	348	350	341	342	354	340	350	351	342	366	369	383	393	377
Avg. Sq. Ft. Price (Sold)	172	178	181	183	183	183	181	181	184	186	186	194	198	204	198
Sold/List Diff. %	99	98	98	98	98	98	98	98	98	98	98	99	99	98	99
Sold/Orig LP Diff. %	97	96	97	97	96	95	95	94	96	96	96	97	97	97	97
Days on Market	114	118	112	111	122	126	129	143	141	135	136	132	117	114	107
Median	289	287	295	296	299	300	295	295	293	283	307	324	325	320	334

All reports are published August 2016, based on data available at the end of July 2016. All reports presented are based on data supplied by the Central Oregon MLS. Neither the Association nor its MLS guarantees or is in anyway responsible for its accuracy. Data maintained by the Association or its MLS may not reflect all real estate activities in the market. Information deemed reliable but not guaranteed.

Location: Deschutes County

Property Types: All Residential Prop - All Property Statuses - All Lot Sizes

Price Range: \$0 - No Limit

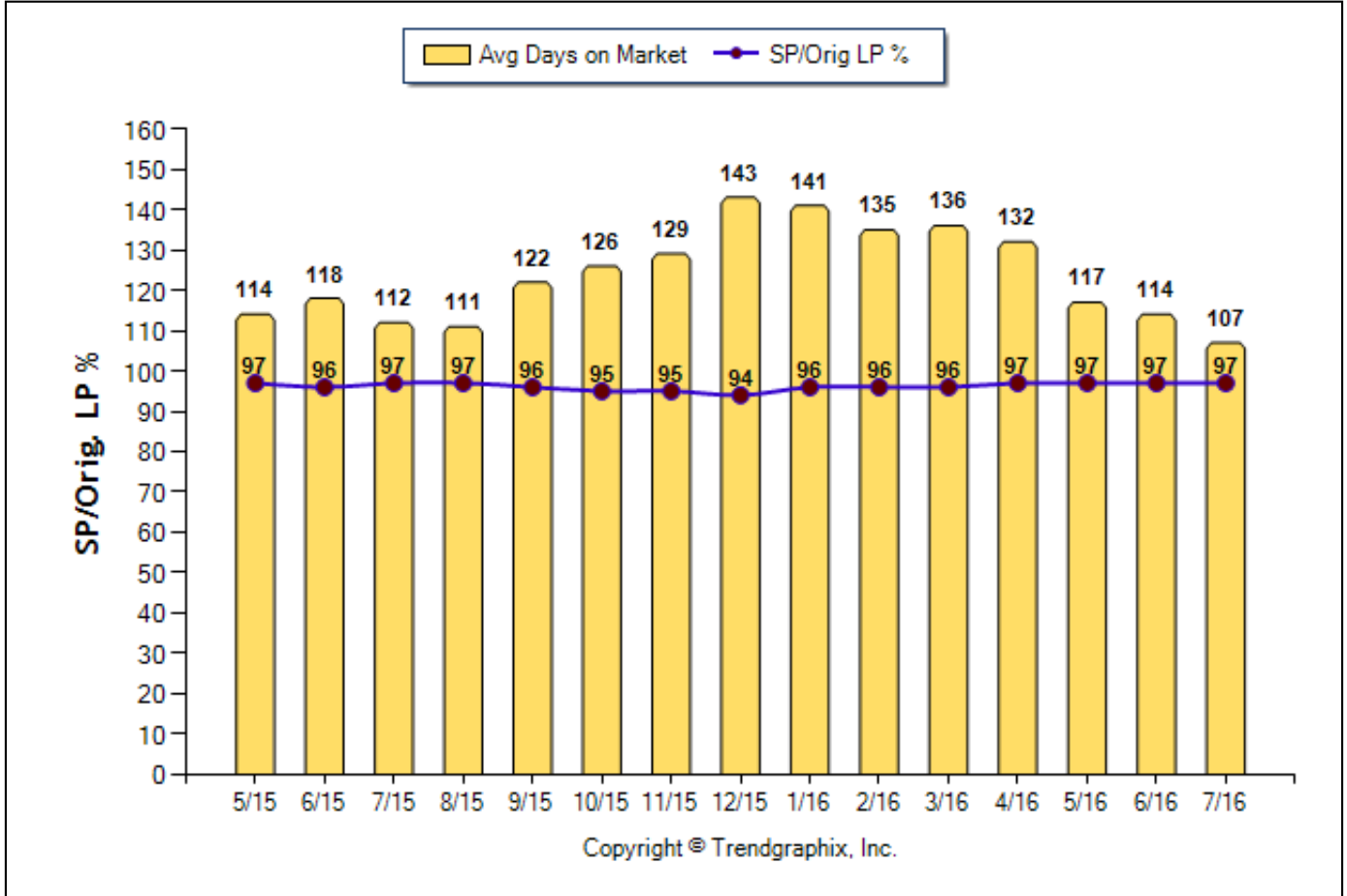
SQFT Range: 0 - No Limit

Bedrooms: 0 - No Limit

Baths: 0 - No Limit

Year Built: 0 - No Limit

Avg Days On Market & SP/Orig LP % (May. 2015 - Jul. 2016)



	Curnt vs. Prev Month			Curnt vs. Same Month 1 Yr Ago			Curnt vs. Same Qtr 1 Yr Ago		
	Jul. 16	Jun. 16	% Change	Jul. 16	Jul. 15	% Change	May. 16 to Jul. 16	May. 15 to Jul. 15	% Change
Days on Market	107	114	-6.1% ▼	107	112	-4.5% ▼	113	115	-1.7% ▼
Sold/Orig LP Diff. %	97	97	0%	97	97	0%	97	97	0%

Date	5/15	6/15	7/15	8/15	9/15	10/15	11/15	12/15	1/16	2/16	3/16	4/16	5/16	6/16	7/16
For Sale	1759	1915	1998	1935	1849	1691	1554	1400	1268	1188	1306	1398	1548	1656	1780
New Listing	735	772	758	646	547	471	361	286	403	452	709	765	781	796	707
Sold	506	568	548	527	552	509	365	480	306	302	430	457	548	588	518
Pended	542	524	536	575	499	481	369	264	370	445	530	601	587	552	599
Months of Inventory (Closed Sales)	3.5	3.4	3.6	3.7	3.3	3.3	4.3	2.9	4.1	3.9	3	3.1	2.8	2.8	3.4
Months of Inventory (Pended Sales)	3.2	3.7	3.7	3.4	3.7	3.5	4.2	5.3	3.4	2.7	2.5	2.3	2.6	3	3
Absorption Rate (Closed Sales) %	28.8	29.7	27.4	27.2	29.9	30.1	23.5	34.3	24.1	25.4	32.9	32.7	35.4	35.5	29.1
Absorption Rate (Pended Sales) %	30.8	27.4	26.8	29.7	27	28.4	23.7	18.9	29.2	37.5	40.6	43	37.9	33.3	33.7
Avg. Active Price	509	513	520	523	531	550	537	535	548	561	551	557	564	582	585
Avg. Sold Price	336	348	350	341	342	354	340	350	351	342	366	369	383	393	377
Avg. Sq. Ft. Price (Sold)	172	178	181	183	183	183	181	181	184	186	186	194	198	204	198
Sold/List Diff. %	99	98	98	98	98	98	98	98	98	98	98	99	99	98	99
Sold/Orig LP Diff. %	97	96	97	97	96	95	95	94	96	96	96	97	97	97	97
Days on Market	114	118	112	111	122	126	129	143	141	141	135	136	132	117	114
Median	289	287	295	296	299	300	295	295	293	283	307	324	325	320	334

All reports are published August 2016, based on data available at the end of July 2016. All reports presented are based on data supplied by the Central Oregon MLS. Neither the Association nor its MLS guarantees or is in anyway responsible for its accuracy. Data maintained by the Association or its MLS may not reflect all real estate activities in the market. Information deemed reliable but not guaranteed.

Location: Deschutes County

Property Types: All Residential Prop - All Property Statuses - All Lot Sizes

Price Range: \$0 - No Limit

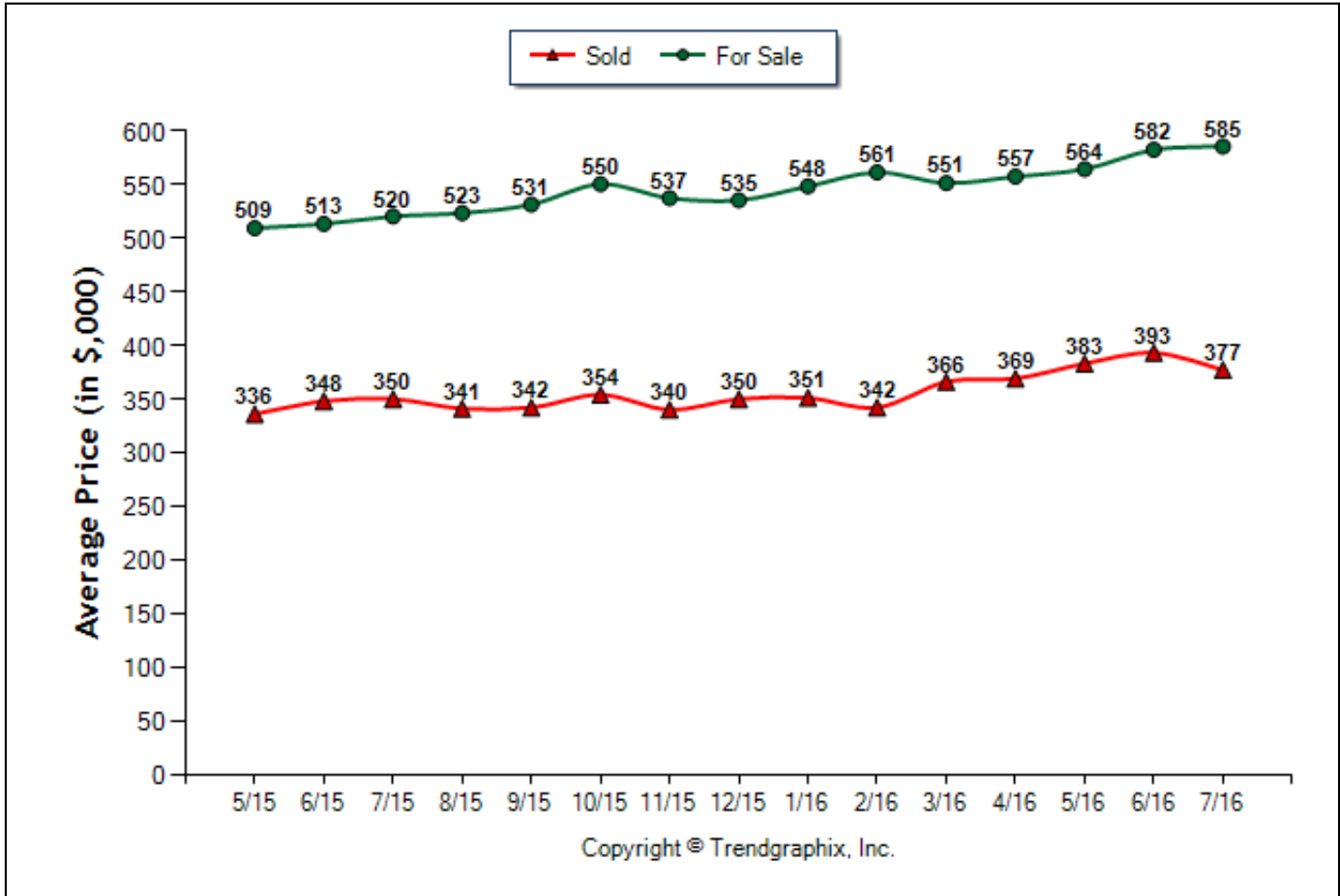
SQFT Range: 0 - No Limit

Bedrooms: 0 - No Limit

Baths: 0 - No Limit

Year Built: 0 - No Limit

Average Price of For Sale and Sold (May. 2015 - Jul. 2016)



	Curnt vs. Prev Month			Curnt vs. Same Month 1 Yr Ago			Curnt vs. Same Qtr 1 Yr Ago		
	Jul. 16	Jun. 16	% Change	Jul. 16	Jul. 15	% Change	May. 16 to Jul. 16	May. 15 to Jul. 15	% Change
Avg. Active Price	585	582	0.5% ▲	585	520	12.5% ▲	577	514	12.3% ▲
Avg. Sold Price	377	393	-4.1% ▼	377	350	7.7% ▲	385	345	11.6% ▲

Date	5/15	6/15	7/15	8/15	9/15	10/15	11/15	12/15	1/16	2/16	3/16	4/16	5/16	6/16	7/16
For Sale	1759	1915	1998	1935	1849	1691	1554	1400	1268	1188	1306	1398	1548	1656	1780
New Listing	735	772	758	646	547	471	361	286	403	452	709	765	781	796	707
Sold	506	568	548	527	552	509	365	480	306	302	430	457	548	588	518
Pended	542	524	536	575	499	481	369	264	370	445	530	601	587	552	599
Months of Inventory (Closed Sales)	3.5	3.4	3.6	3.7	3.3	3.3	4.3	2.9	4.1	3.9	3	3.1	2.8	2.8	3.4
Months of Inventory (Pended Sales)	3.2	3.7	3.7	3.4	3.7	3.5	4.2	5.3	3.4	2.7	2.5	2.3	2.6	3	3
Absorption Rate (Closed Sales) %	28.8	29.7	27.4	27.2	29.9	30.1	23.5	34.3	24.1	25.4	32.9	32.7	35.4	35.5	29.1
Absorption Rate (Pended Sales) %	30.8	27.4	26.8	29.7	27	28.4	23.7	18.9	29.2	37.5	40.6	43	37.9	33.3	33.7
Avg. Active Price	509	513	520	523	531	550	537	535	548	561	551	557	564	582	585
Avg. Sold Price	336	348	350	341	342	354	340	350	351	342	366	369	383	393	377
Avg. Sq. Ft. Price (Sold)	172	178	181	183	183	183	181	181	184	186	186	194	198	204	198
Sold/List Diff. %	99	98	98	98	98	98	98	98	98	98	98	99	99	98	99
Sold/Orig LP Diff. %	97	96	97	97	96	95	95	94	96	96	96	97	97	97	97
Days on Market	114	118	112	111	122	126	129	143	141	135	136	132	117	114	107
Median	289	287	295	296	299	300	295	295	293	283	307	324	325	320	334

All reports are published August 2016, based on data available at the end of July 2016. All reports presented are based on data supplied by the Central Oregon MLS. Neither the Association nor its MLS guarantees or is in anyway responsible for its accuracy. Data maintained by the Association or its MLS may not reflect all real estate activities in the market. Information deemed reliable but not guaranteed.

Location: Deschutes County

Property Types: All Residential Prop - All Property Statuses - All Lot Sizes

Price Range: \$0 - No Limit

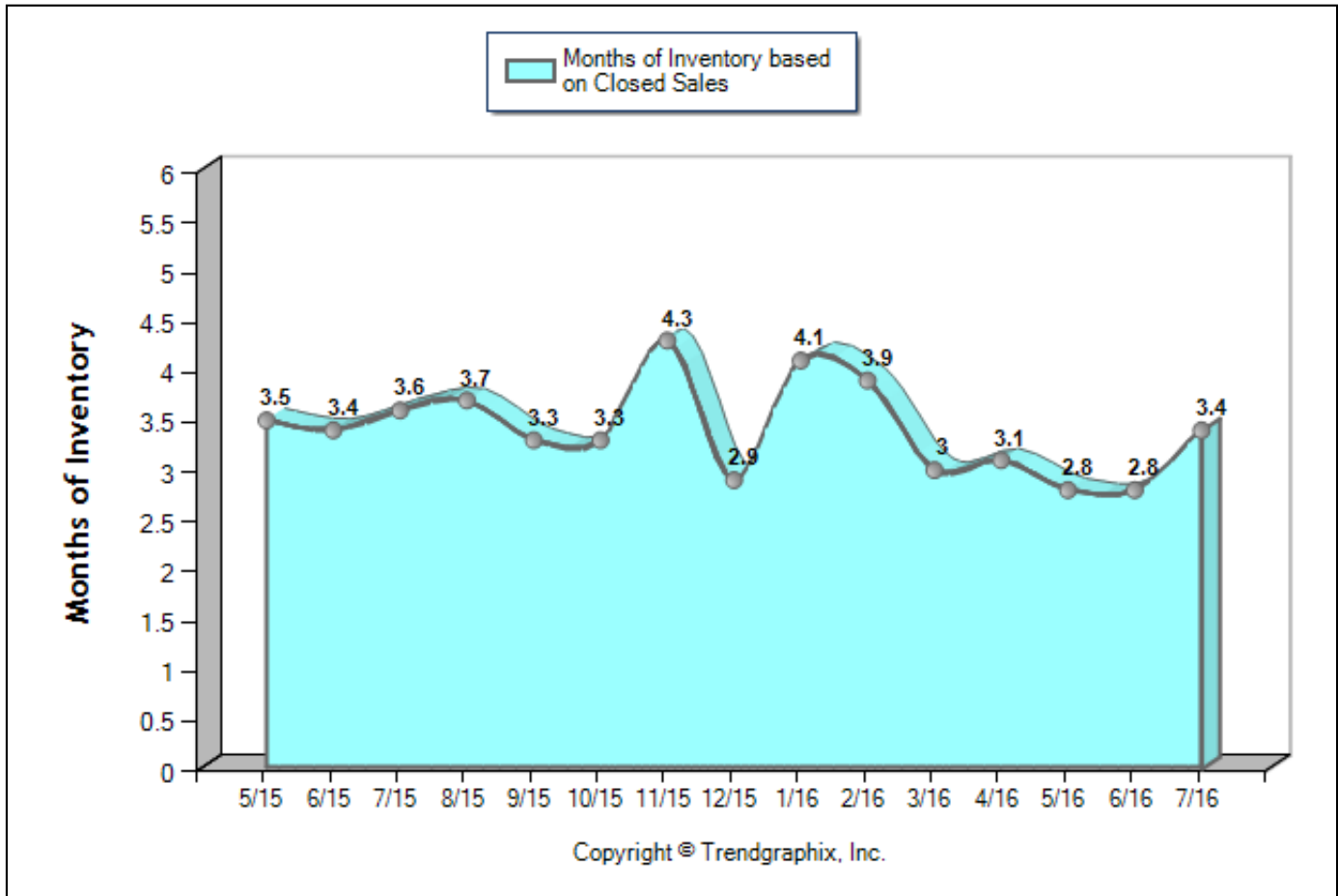
SQFT Range: 0 - No Limit

Bedrooms: 0 - No Limit

Baths: 0 - No Limit

Year Built: 0 - No Limit

Months of Inventory Based on Closed Sales (May. 2015 - Jul. 2016)



	Curnt vs. Prev Month			Curnt vs. Same Month 1 Yr Ago			Curnt vs. Same Qtr 1 Yr Ago		
	Jul. 16	Jun. 16	% Change	Jul. 16	Jul. 15	% Change	May. 16 to Jul. 16	May. 15 to Jul. 15	% Change
Months of Inventory (Closed Sales)	3.4	2.8	21.3% ▲	3.4	3.6	-5.5% ▼	3	3.5	-14.3% ▼

Date	5/15	6/15	7/15	8/15	9/15	10/15	11/15	12/15	1/16	2/16	3/16	4/16	5/16	6/16	7/16
For Sale	1759	1915	1998	1935	1849	1691	1554	1400	1268	1188	1306	1398	1548	1656	1780
New Listing	735	772	758	646	547	471	361	286	403	452	709	765	781	796	707
Sold	506	568	548	527	552	509	365	480	306	302	430	457	548	588	518
Pended	542	524	536	575	499	481	369	264	370	445	530	601	587	552	599
Months of Inventory (Closed Sales)	3.5	3.4	3.6	3.7	3.3	3.3	4.3	2.9	4.1	3.9	3	3.1	2.8	2.8	3.4
Months of Inventory (Pended Sales)	3.2	3.7	3.7	3.4	3.7	3.5	4.2	5.3	3.4	2.7	2.5	2.3	2.6	3	3
Absorption Rate (Closed Sales) %	28.8	29.7	27.4	27.2	29.9	30.1	23.5	34.3	24.1	25.4	32.9	32.7	35.4	35.5	29.1
Absorption Rate (Pended Sales) %	30.8	27.4	26.8	29.7	27	28.4	23.7	18.9	29.2	37.5	40.6	43	37.9	33.3	33.7
Avg. Active Price	509	513	520	523	531	550	537	535	548	561	551	557	564	582	585
Avg. Sold Price	336	348	350	341	342	354	340	350	351	342	366	369	383	393	377
Avg. Sq. Ft. Price (Sold)	172	178	181	183	183	183	181	181	184	186	186	194	198	204	198
Sold/List Diff. %	99	98	98	98	98	98	98	98	98	98	98	99	99	98	99
Sold/Orig LP Diff. %	97	96	97	97	96	95	95	94	96	96	96	97	97	97	97
Days on Market	114	118	112	111	122	126	129	143	141	135	136	132	117	114	107
Median	289	287	295	296	299	300	295	295	293	283	307	324	325	320	334

All reports are published August 2016, based on data available at the end of July 2016. All reports presented are based on data supplied by the Central Oregon MLS. Neither the Association nor its MLS guarantees or is in anyway responsible for its accuracy. Data maintained by the Association or its MLS may not reflect all real estate activities in the market. Information deemed reliable but not guaranteed.