

**Location:** Deschutes County

**Property Types:** All Residential Prop - All Property Statuses - All Lot Sizes

**Price Range:** \$0 - No Limit

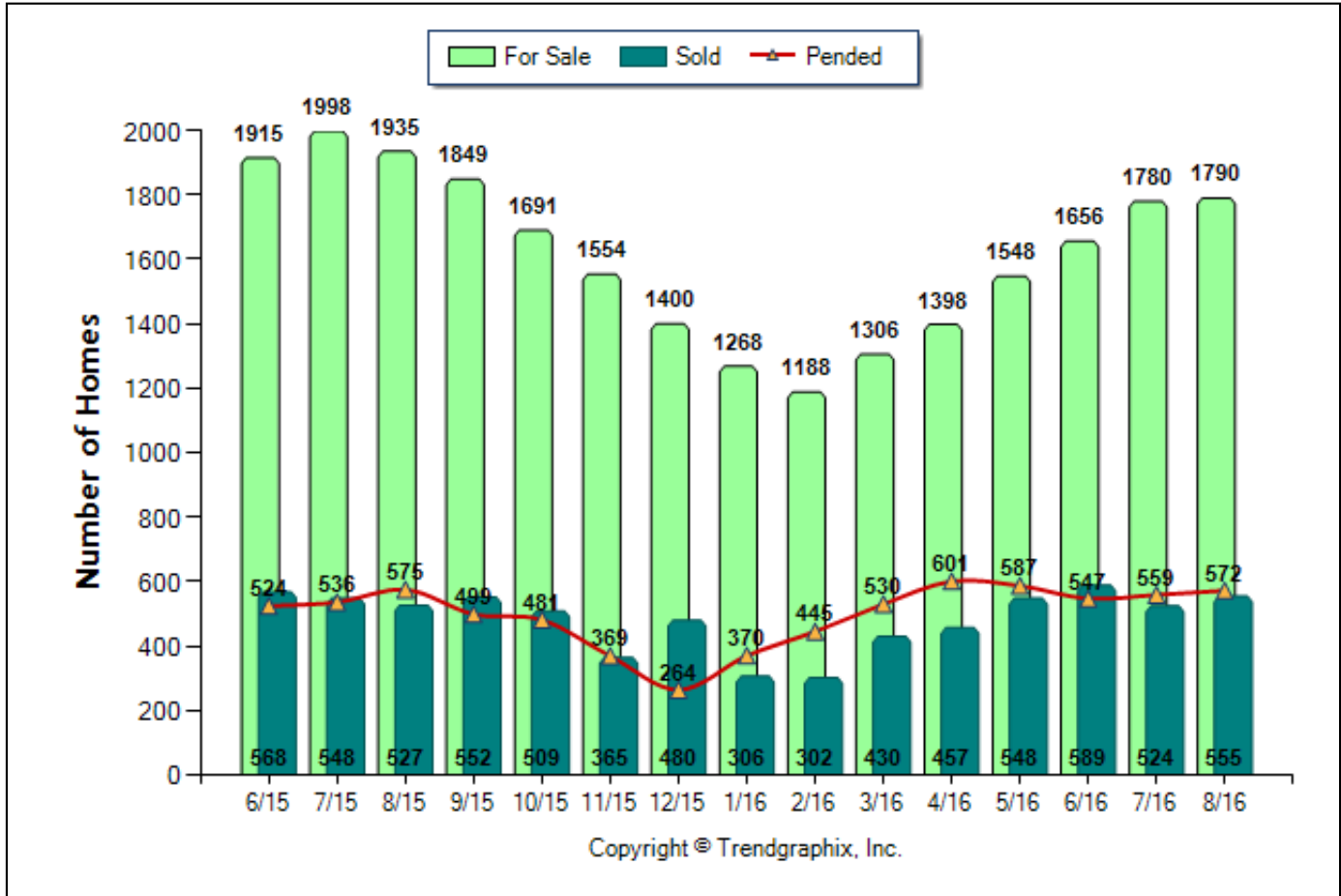
**SQFT Range:** 0 - No Limit

**Bedrooms:** 0 - No Limit

**Baths:** 0 - No Limit

**Year Built:** 0 - No Limit

**Number of Homes For Sale vs. Sold vs. Pended (Jun. 2015 - Aug. 2016)**



	Curnt vs. Prev Month			Curnt vs. Same Month 1 Yr Ago			Curnt vs. Same Qtr 1 Yr Ago		
	Aug. 16	Jul. 16	% Change	Aug. 16	Aug. 15	% Change	Jun. 16 to Aug. 16	Jun. 15 to Aug. 15	% Change
<b>For Sale</b>	1790	1780	0.6% ▲	1790	1935	-7.5% ▼	5226	5848	-10.6% ▼
<b>Sold</b>	555	524	5.9% ▲	555	527	5.3% ▲	1668	1643	1.5% ▲
<b>Pended</b>	572	559	2.3% ▲	572	575	-0.5% ▼	1678	1635	2.6% ▲

Date	6/15	7/15	8/15	9/15	10/15	11/15	12/15	1/16	2/16	3/16	4/16	5/16	6/16	7/16	8/16
<b>For Sale</b>	1915	1998	1935	1849	1691	1554	1400	1268	1188	1306	1398	1548	1656	1780	1790
<b>New Listing</b>	772	758	646	547	471	361	286	403	452	709	765	781	797	712	674
<b>Sold</b>	568	548	527	552	509	365	480	306	302	430	457	548	589	524	555
<b>Pended</b>	524	536	575	499	481	369	264	370	445	530	601	587	547	559	572
<b>Months of Inventory (Closed Sales)</b>	3.4	3.6	3.7	3.3	3.3	4.3	2.9	4.1	3.9	3	3.1	2.8	2.8	3.4	3.2
<b>Months of Inventory (Pended Sales)</b>	3.7	3.7	3.4	3.7	3.5	4.2	5.3	3.4	2.7	2.5	2.3	2.6	3	3.2	3.1
<b>Absorption Rate (Closed Sales) %</b>	29.7	27.4	27.2	29.9	30.1	23.5	34.3	24.1	25.4	32.9	32.7	35.4	35.6	29.4	31
<b>Absorption Rate (Pended Sales) %</b>	27.4	26.8	29.7	27	28.4	23.7	18.9	29.2	37.5	40.6	43	37.9	33	31.4	32
<b>Avg. Active Price</b>	513	520	523	531	550	537	535	548	561	551	557	564	582	585	590
<b>Avg. Sold Price</b>	348	350	341	342	354	340	350	351	342	366	369	383	394	377	380
<b>Avg. Sq. Ft. Price (Sold)</b>	178	181	183	183	183	181	181	184	186	186	194	198	204	198	199
<b>Sold/List Diff. %</b>	98	98	98	98	98	98	98	98	98	98	99	99	98	98	98
<b>Sold/Orig LP Diff. %</b>	96	97	97	96	95	95	94	96	96	96	97	97	97	97	96
<b>Days on Market</b>	118	112	111	122	126	129	143	141	135	136	132	117	114	107	108
<b>Median</b>	287	295	296	299	300	295	295	293	283	307	324	325	320	334	325

All reports are published September 2016, based on data available at the end of August 2016. All reports presented are based on data supplied by the Central Oregon MLS. Neither the Association nor its MLS guarantees or is in anyway responsible for its accuracy. Data maintained by the Association or its MLS may not reflect all real estate activities in the market. Information deemed reliable but not guaranteed.

**Location:** Deschutes County

**Property Types:** All Residential Prop - All Property Statuses - All Lot Sizes

**Price Range:** \$0 - No Limit

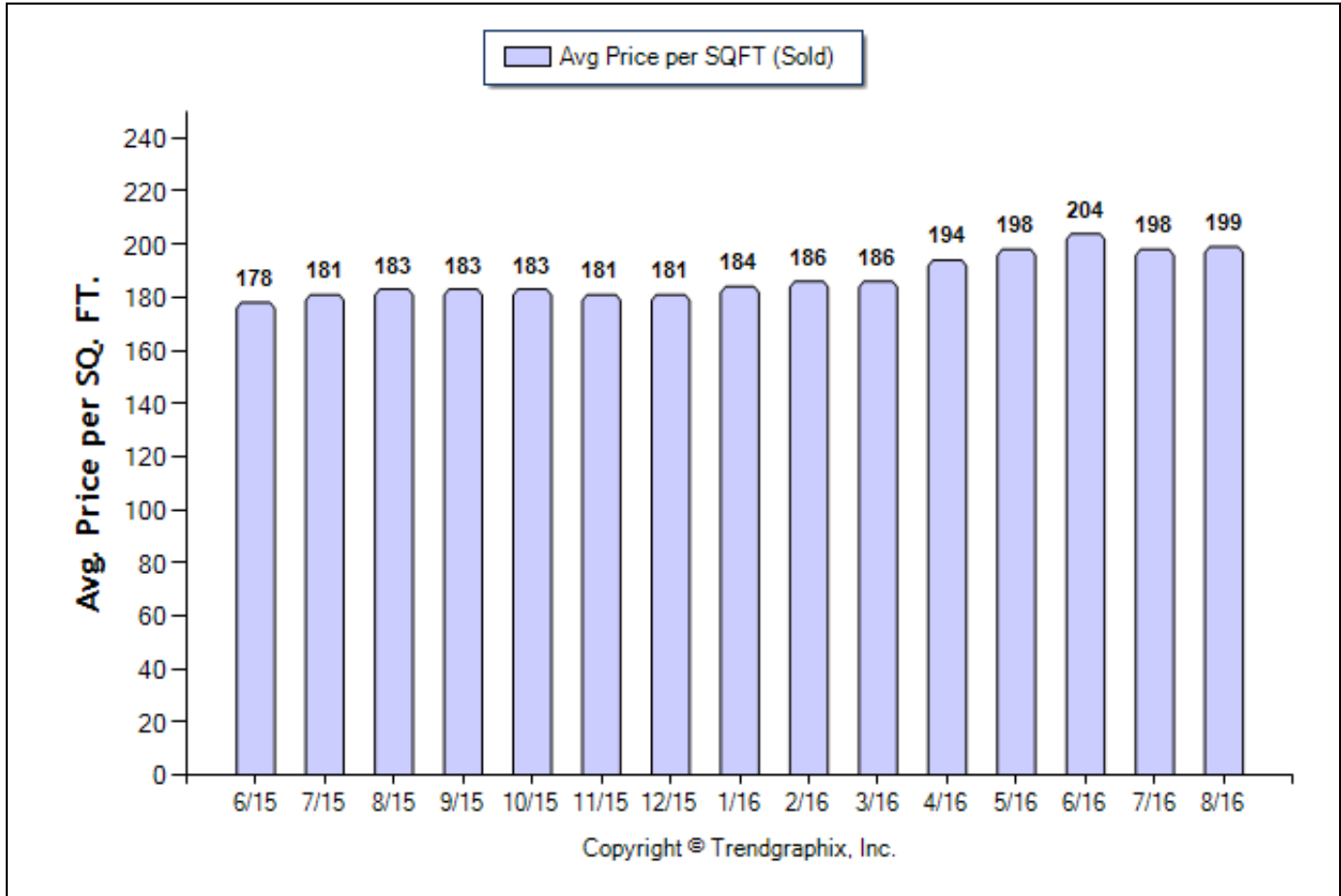
**SQFT Range:** 0 - No Limit

**Bedrooms:** 0 - No Limit

**Baths:** 0 - No Limit

**Year Built:** 0 - No Limit

**Average Price per SQFT (Sold) (Jun. 2015 - Aug. 2016)**



	Curnt vs. Prev Month			Curnt vs. Same Month 1 Yr Ago			Curnt vs. Same Qtr 1 Yr Ago		
	Aug. 16	Jul. 16	% Change	Aug. 16	Aug. 15	% Change	Jun. 16 to Aug. 16	Jun. 15 to Aug. 15	% Change
Avg. Sq. Ft. Price (Sold)	199	198	0.5% ▲	199	183	8.7% ▲	200.45	180.6	11% ▲

Date	6/15	7/15	8/15	9/15	10/15	11/15	12/15	1/16	2/16	3/16	4/16	5/16	6/16	7/16	8/16
For Sale	1915	1998	1935	1849	1691	1554	1400	1268	1188	1306	1398	1548	1656	1780	1790
New Listing	772	758	646	547	471	361	286	403	452	709	765	781	797	712	674
Sold	568	548	527	552	509	365	480	306	302	430	457	548	589	524	555
Pended	524	536	575	499	481	369	264	370	445	530	601	587	547	559	572
Months of Inventory (Closed Sales)	3.4	3.6	3.7	3.3	3.3	4.3	2.9	4.1	3.9	3	3.1	2.8	2.8	3.4	3.2
Months of Inventory (Pended Sales)	3.7	3.7	3.4	3.7	3.5	4.2	5.3	3.4	2.7	2.5	2.3	2.6	3	3.2	3.1
Absorption Rate (Closed Sales) %	29.7	27.4	27.2	29.9	30.1	23.5	34.3	24.1	25.4	32.9	32.7	35.4	35.6	29.4	31
Absorption Rate (Pended Sales) %	27.4	26.8	29.7	27	28.4	23.7	18.9	29.2	37.5	40.6	43	37.9	33	31.4	32
Avg. Active Price	513	520	523	531	550	537	535	548	561	551	557	564	582	585	590
Avg. Sold Price	348	350	341	342	354	340	350	351	342	366	369	383	394	377	380
Avg. Sq. Ft. Price (Sold)	178	181	183	183	183	181	181	184	186	186	194	198	204	198	199
Sold/List Diff. %	98	98	98	98	98	98	98	98	98	98	99	99	98	98	98
Sold/Orig LP Diff. %	96	97	97	96	95	95	94	96	96	96	97	97	97	97	96
Days on Market	118	112	111	122	126	129	143	141	135	136	132	117	114	107	108
Median	287	295	296	299	300	295	295	293	283	307	324	325	320	334	325

All reports are published September 2016, based on data available at the end of August 2016. All reports presented are based on data supplied by the Central Oregon MLS. Neither the Association nor its MLS guarantees or is in anyway responsible for its accuracy. Data maintained by the Association or its MLS may not reflect all real estate activities in the market. Information deemed reliable but not guaranteed.

Location: Deschutes County

Property Types: All Residential Prop - All Property Statuses - All Lot Sizes

Price Range: \$0 - No Limit

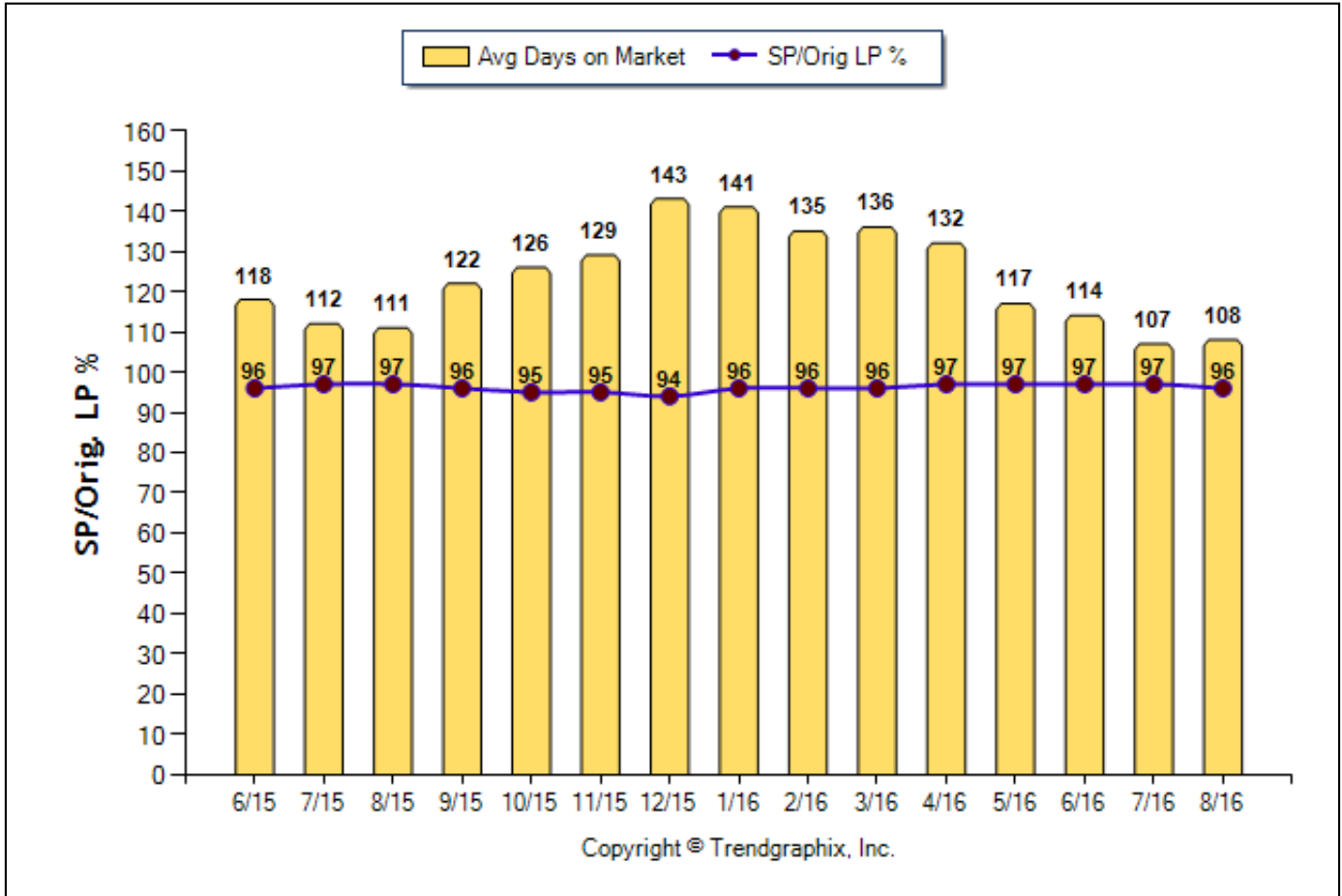
SQFT Range: 0 - No Limit

Bedrooms: 0 - No Limit

Baths: 0 - No Limit

Year Built: 0 - No Limit

**Avg Days On Market & SP/Orig LP % (Jun. 2015 - Aug. 2016)**



	Curnt vs. Prev Month			Curnt vs. Same Month 1 Yr Ago			Curnt vs. Same Qtr 1 Yr Ago		
	Aug. 16	Jul. 16	% Change	Aug. 16	Aug. 15	% Change	Jun. 16 to Aug. 16	Jun. 15 to Aug. 15	% Change
Days on Market	108	107	0.9% ▲	108	111	-2.7% ▼	110	114	-3.5% ▼
Sold/Orig LP Diff. %	96	97	-1% ▼	96	97	-1% ▼	97	97	0%

Date	6/15	7/15	8/15	9/15	10/15	11/15	12/15	1/16	2/16	3/16	4/16	5/16	6/16	7/16	8/16
For Sale	1915	1998	1935	1849	1691	1554	1400	1268	1188	1306	1398	1548	1656	1780	1790
New Listing	772	758	646	547	471	361	286	403	452	709	765	781	797	712	674
Sold	568	548	527	552	509	365	480	306	302	430	457	548	589	524	555
Pended	524	536	575	499	481	369	264	370	445	530	601	587	547	559	572
Months of Inventory (Closed Sales)	3.4	3.6	3.7	3.3	3.3	4.3	2.9	4.1	3.9	3	3.1	2.8	2.8	3.4	3.2
Months of Inventory (Pended Sales)	3.7	3.7	3.4	3.7	3.5	4.2	5.3	3.4	2.7	2.5	2.3	2.6	3	3.2	3.1
Absorption Rate (Closed Sales) %	29.7	27.4	27.2	29.9	30.1	23.5	34.3	24.1	25.4	32.9	32.7	35.4	35.6	29.4	31
Absorption Rate (Pended Sales) %	27.4	26.8	29.7	27	28.4	23.7	18.9	29.2	37.5	40.6	43	37.9	33	31.4	32
Avg. Active Price	513	520	523	531	550	537	535	548	561	551	557	564	582	585	590
Avg. Sold Price	348	350	341	342	354	340	350	351	342	366	369	383	394	377	380
Avg. Sq. Ft. Price (Sold)	178	181	183	183	183	181	181	184	186	186	194	198	204	198	199
Sold/List Diff. %	98	98	98	98	98	98	98	98	98	98	99	99	98	98	98
Sold/Orig LP Diff. %	96	97	97	96	95	95	94	96	96	96	97	97	97	97	96
Days on Market	118	112	111	122	126	129	143	141	135	136	132	117	114	107	108
Median	287	295	296	299	300	295	295	293	283	307	324	325	320	334	325

All reports are published September 2016, based on data available at the end of August 2016. All reports presented are based on data supplied by the Central Oregon MLS. Neither the Association nor its MLS guarantees or is in anyway responsible for its accuracy. Data maintained by the Association or its MLS may not reflect all real estate activities in the market. Information deemed reliable but not guaranteed.

**Location:** Deschutes County

**Property Types:** All Residential Prop - All Property Statuses - All Lot Sizes

**Price Range:** \$0 - No Limit

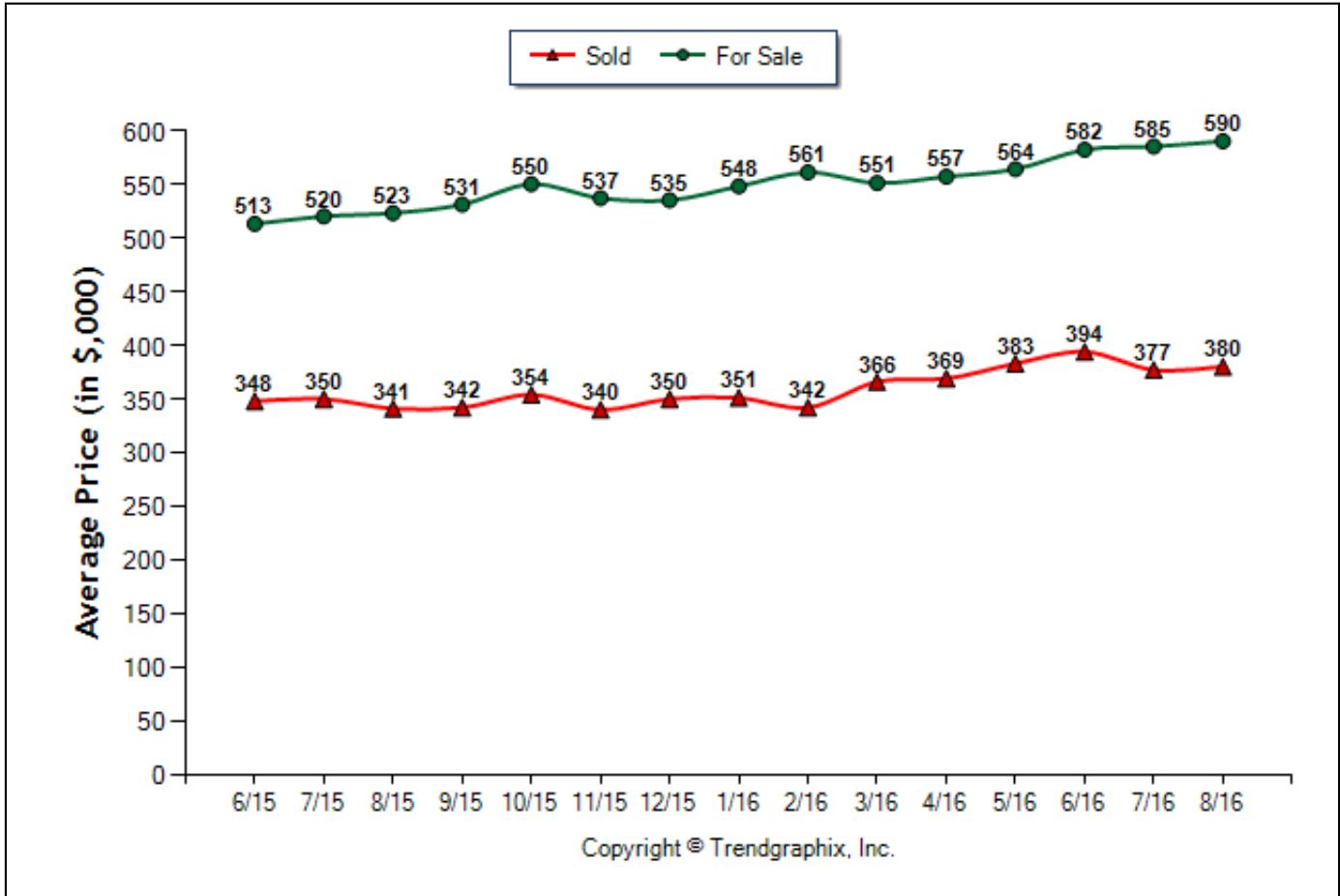
**SQFT Range:** 0 - No Limit

**Bedrooms:** 0 - No Limit

**Baths:** 0 - No Limit

**Year Built:** 0 - No Limit

**Average Price of For Sale and Sold (Jun. 2015 - Aug. 2016)**



	Curnt vs. Prev Month			Curnt vs. Same Month 1 Yr Ago			Curnt vs. Same Qtr 1 Yr Ago		
	Aug. 16	Jul. 16	% Change	Aug. 16	Aug. 15	% Change	Jun. 16 to Aug. 16	Jun. 15 to Aug. 15	% Change
Avg. Active Price	590	585	0.9% ▲	590	523	12.8% ▲	586	519	12.9% ▲
Avg. Sold Price	380	377	0.8% ▲	380	341	11.4% ▲	384	346	11% ▲

Date	6/15	7/15	8/15	9/15	10/15	11/15	12/15	1/16	2/16	3/16	4/16	5/16	6/16	7/16	8/16
<b>For Sale</b>	1915	1998	1935	1849	1691	1554	1400	1268	1188	1306	1398	1548	1656	1780	1790
<b>New Listing</b>	772	758	646	547	471	361	286	403	452	709	765	781	797	712	674
<b>Sold</b>	568	548	527	552	509	365	480	306	302	430	457	548	589	524	555
<b>Pended</b>	524	536	575	499	481	369	264	370	445	530	601	587	547	559	572
<b>Months of Inventory (Closed Sales)</b>	3.4	3.6	3.7	3.3	3.3	4.3	2.9	4.1	3.9	3	3.1	2.8	2.8	3.4	3.2
<b>Months of Inventory (Pended Sales)</b>	3.7	3.7	3.4	3.7	3.5	4.2	5.3	3.4	2.7	2.5	2.3	2.6	3	3.2	3.1
<b>Absorption Rate (Closed Sales) %</b>	29.7	27.4	27.2	29.9	30.1	23.5	34.3	24.1	25.4	32.9	32.7	35.4	35.6	29.4	31
<b>Absorption Rate (Pended Sales) %</b>	27.4	26.8	29.7	27	28.4	23.7	18.9	29.2	37.5	40.6	43	37.9	33	31.4	32
<b>Avg. Active Price</b>	513	520	523	531	550	537	535	548	561	551	557	564	582	585	590
<b>Avg. Sold Price</b>	348	350	341	342	354	340	350	351	342	366	369	383	394	377	380
<b>Avg. Sq. Ft. Price (Sold)</b>	178	181	183	183	183	181	181	184	186	186	194	198	204	198	199
<b>Sold/List Diff. %</b>	98	98	98	98	98	98	98	98	98	98	99	99	98	98	98
<b>Sold/Orig LP Diff. %</b>	96	97	97	96	95	95	94	96	96	96	97	97	97	97	96
<b>Days on Market</b>	118	112	111	122	126	129	143	141	135	136	132	117	114	107	108
<b>Median</b>	287	295	296	299	300	295	295	293	283	307	324	325	320	334	325

All reports are published September 2016, based on data available at the end of August 2016. All reports presented are based on data supplied by the Central Oregon MLS. Neither the Association nor its MLS guarantees or is in anyway responsible for its accuracy. Data maintained by the Association or its MLS may not reflect all real estate activities in the market. Information deemed reliable but not guaranteed.

**Location:** Deschutes County

**Property Types:** All Residential Prop - All Property Statuses - All Lot Sizes

**Price Range:** \$0 - No Limit

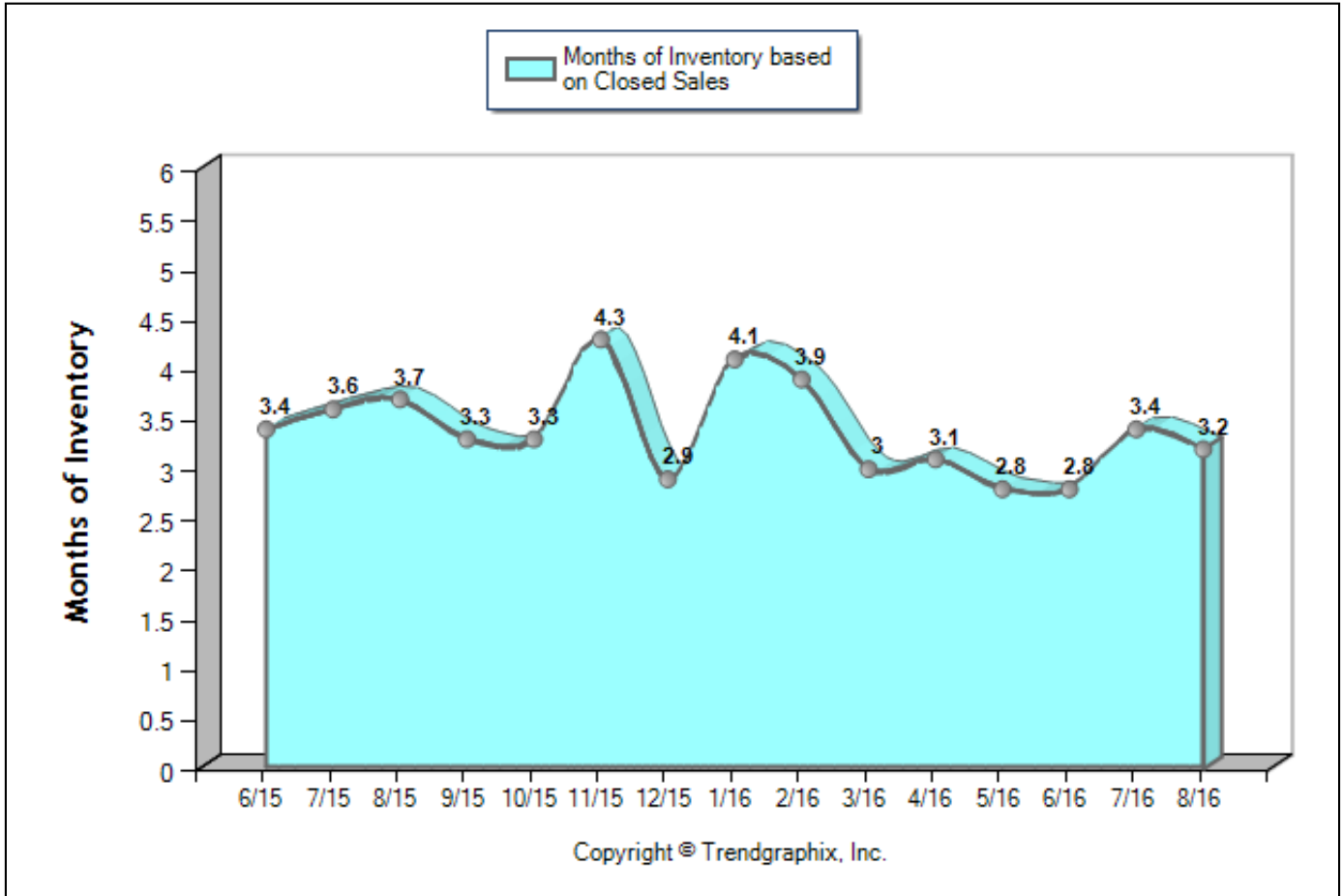
**SQFT Range:** 0 - No Limit

**Bedrooms:** 0 - No Limit

**Baths:** 0 - No Limit

**Year Built:** 0 - No Limit

**Months of Inventory Based on Closed Sales (Jun. 2015 - Aug. 2016)**



	Curnt vs. Prev Month			Curnt vs. Same Month 1 Yr Ago			Curnt vs. Same Qtr 1 Yr Ago		
	Aug. 16	Jul. 16	% Change	Aug. 16	Aug. 15	% Change	Jun. 16 to Aug. 16	Jun. 15 to Aug. 15	% Change
Months of Inventory (Closed Sales)	3.2	3.4	-5.9% ▼	3.2	3.7	-13.6% ▼	3.1	3.6	-14% ▼

Date	6/15	7/15	8/15	9/15	10/15	11/15	12/15	1/16	2/16	3/16	4/16	5/16	6/16	7/16	8/16
For Sale	1915	1998	1935	1849	1691	1554	1400	1268	1188	1306	1398	1548	1656	1780	1790
New Listing	772	758	646	547	471	361	286	403	452	709	765	781	797	712	674
Sold	568	548	527	552	509	365	480	306	302	430	457	548	589	524	555
Pended	524	536	575	499	481	369	264	370	445	530	601	587	547	559	572
Months of Inventory (Closed Sales)	3.4	3.6	3.7	3.3	3.3	4.3	2.9	4.1	3.9	3	3.1	2.8	2.8	3.4	3.2
Months of Inventory (Pended Sales)	3.7	3.7	3.4	3.7	3.5	4.2	5.3	3.4	2.7	2.5	2.3	2.6	3	3.2	3.1
Absorption Rate (Closed Sales) %	29.7	27.4	27.2	29.9	30.1	23.5	34.3	24.1	25.4	32.9	32.7	35.4	35.6	29.4	31
Absorption Rate (Pended Sales) %	27.4	26.8	29.7	27	28.4	23.7	18.9	29.2	37.5	40.6	43	37.9	33	31.4	32
Avg. Active Price	513	520	523	531	550	537	535	548	561	551	557	564	582	585	590
Avg. Sold Price	348	350	341	342	354	340	350	351	342	366	369	383	394	377	380
Avg. Sq. Ft. Price (Sold)	178	181	183	183	183	181	181	184	186	186	194	198	204	198	199
Sold/List Diff. %	98	98	98	98	98	98	98	98	98	98	99	99	98	98	98
Sold/Orig LP Diff. %	96	97	97	96	95	95	94	96	96	96	97	97	97	97	96
Days on Market	118	112	111	122	126	129	143	141	135	136	132	117	114	107	108
Median	287	295	296	299	300	295	295	293	283	307	324	325	320	334	325

All reports are published September 2016, based on data available at the end of August 2016. All reports presented are based on data supplied by the Central Oregon MLS. Neither the Association nor its MLS guarantees or is in anyway responsible for its accuracy. Data maintained by the Association or its MLS may not reflect all real estate activities in the market. Information deemed reliable but not guaranteed.