

**Location:** Deschutes County

**Property Types:** All Residential Prop - All Property Statuses - All Lot Sizes

**Price Range:** \$0 - No Limit

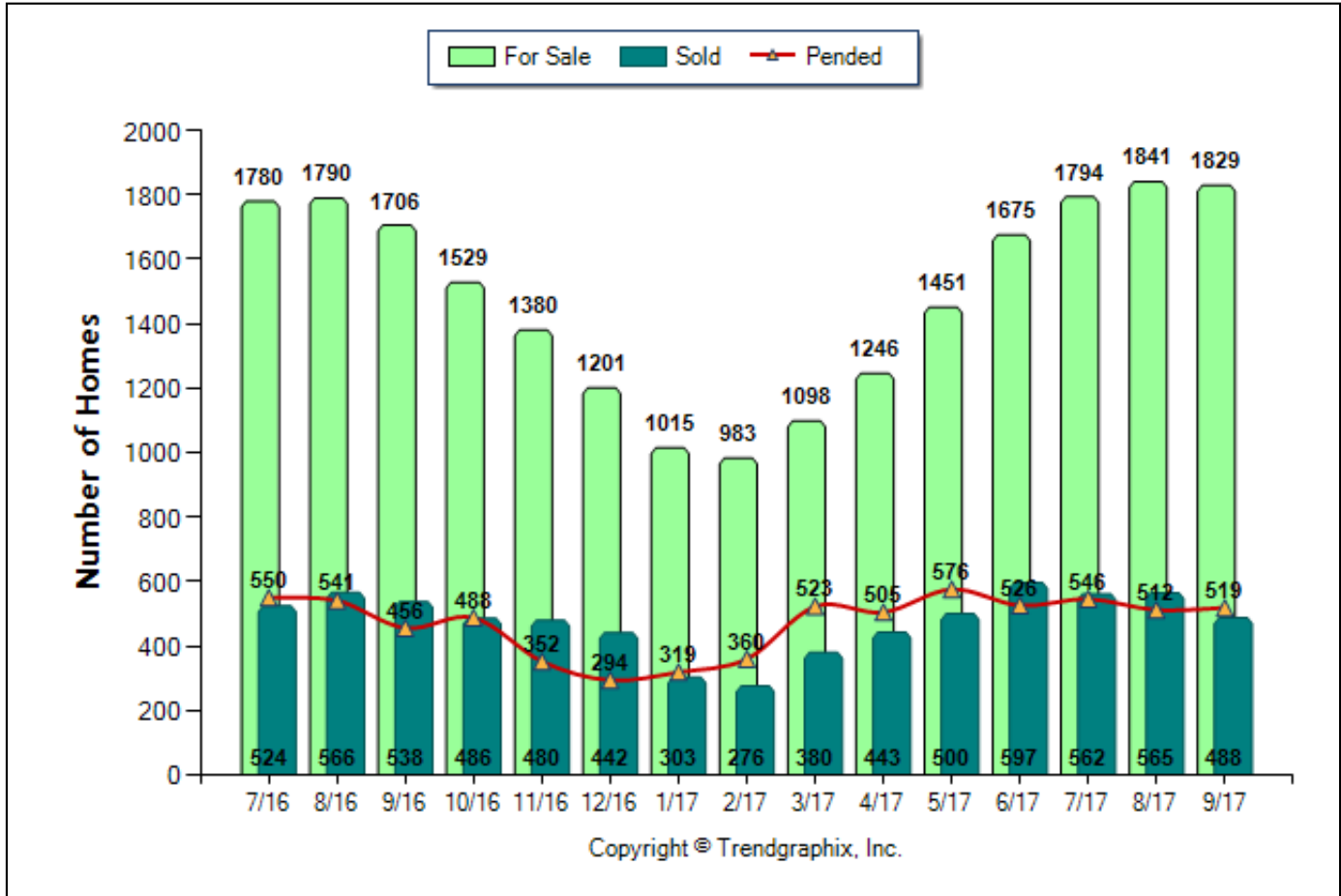
**SQFT Range:** 0 - No Limit

**Bedrooms:** 0 - No Limit

**Baths:** 0 - No Limit

**Year Built:** 0 - No Limit

**Number of Homes For Sale vs. Sold vs. Pended (Jul. 2016 - Sep. 2017)**



	Curnt vs. Prev Month			Curnt vs. Same Month 1 Yr Ago			Curnt vs. Same Qtr 1 Yr Ago		
	Sep. 17	Aug. 17	% Change	Sep. 17	Sep. 16	% Change	Jul. 17 to Sep. 17	Jul. 16 to Sep. 16	% Change
<b>For Sale</b>	1829	1841	0.7% ▼	1829	1706	7.2% ▲	1829	1706	7.2% ▲
<b>Sold</b>	488	565	-13.6% ▼	488	538	-9.3% ▼	1615	1628	0.8% ▼
<b>Pended</b>	519	512	1.4% ▲	519	456	13.8% ▲	1577	1547	1.9% ▲

Date	7/16	8/16	9/16	10/16	11/16	12/16	1/17	2/17	3/17	4/17	5/17	6/17	7/17	8/17	9/17
<b>For Sale</b>	1780	1790	1706	1529	1380	1201	1015	983	1098	1246	1451	1675	1794	1841	1829
<b>New Listing</b>	712	680	519	454	346	224	257	396	708	709	861	871	695	726	625
<b>Sold</b>	524	566	538	486	480	442	303	276	380	443	500	597	562	565	488
<b>Pended</b>	550	541	456	488	352	294	319	360	523	505	576	526	546	512	519
<b>Months of Inventory (Closed Sales)</b>	3.4	3.2	3.2	3.1	2.9	2.7	3.3	3.6	2.9	2.8	2.9	2.8	3.2	3.3	3.7
<b>Months of Inventory (Pended Sales)</b>	3.2	3.3	3.7	3.1	3.9	4.1	3.2	2.7	2.1	2.5	2.5	3.2	3.3	3.6	3.5
<b>Absorption Rate (Closed Sales) %</b>	29.4	31.6	31.5	31.8	34.8	36.8	29.9	28.1	34.6	35.6	34.5	35.6	31.3	30.7	26.7
<b>Absorption Rate (Pended Sales) %</b>	30.9	30.2	26.7	31.9	25.5	24.5	31.4	36.6	47.6	40.5	39.7	31.4	30.4	27.8	28.4
<b>Avg. Active Price</b>	585	590	584	585	576	583	580	585	590	597	605	612	616	603	588
<b>Avg. Sold Price</b>	377	378	379	372	396	374	392	389	389	429	403	401	417	421	427
<b>Avg. Sq. Ft. Price (Sold)</b>	198	199	201	199	201	198	201	203	199	212	213	211	220	218	217
<b>Sold/List Diff. %</b>	98	98	99	98	98	98	98	98	98	98	99	99	99	99	98
<b>Sold/Orig LP Diff. %</b>	97	96	96	96	95	95	95	95	96	97	98	97	98	97	96
<b>Days on Market</b>	107	107	119	121	125	124	138	143	133	117	113	104	104	104	103
<b>Median</b>	334	324	330	332	328	321	340	323	338	360	347	350	350	365	370

All reports are published October 2017, based on data available at the end of September 2017. All reports presented are based on data supplied by the Central Oregon MLS. Neither the Association nor its MLS guarantees or is in anyway responsible for its accuracy. Data maintained by the Association or its MLS may not reflect all real estate activities in the market. Information deemed reliable but not guaranteed.

**Location:** Deschutes County

**Property Types:** All Residential Prop - All Property Statuses - All Lot Sizes

**Price Range:** \$0 - No Limit

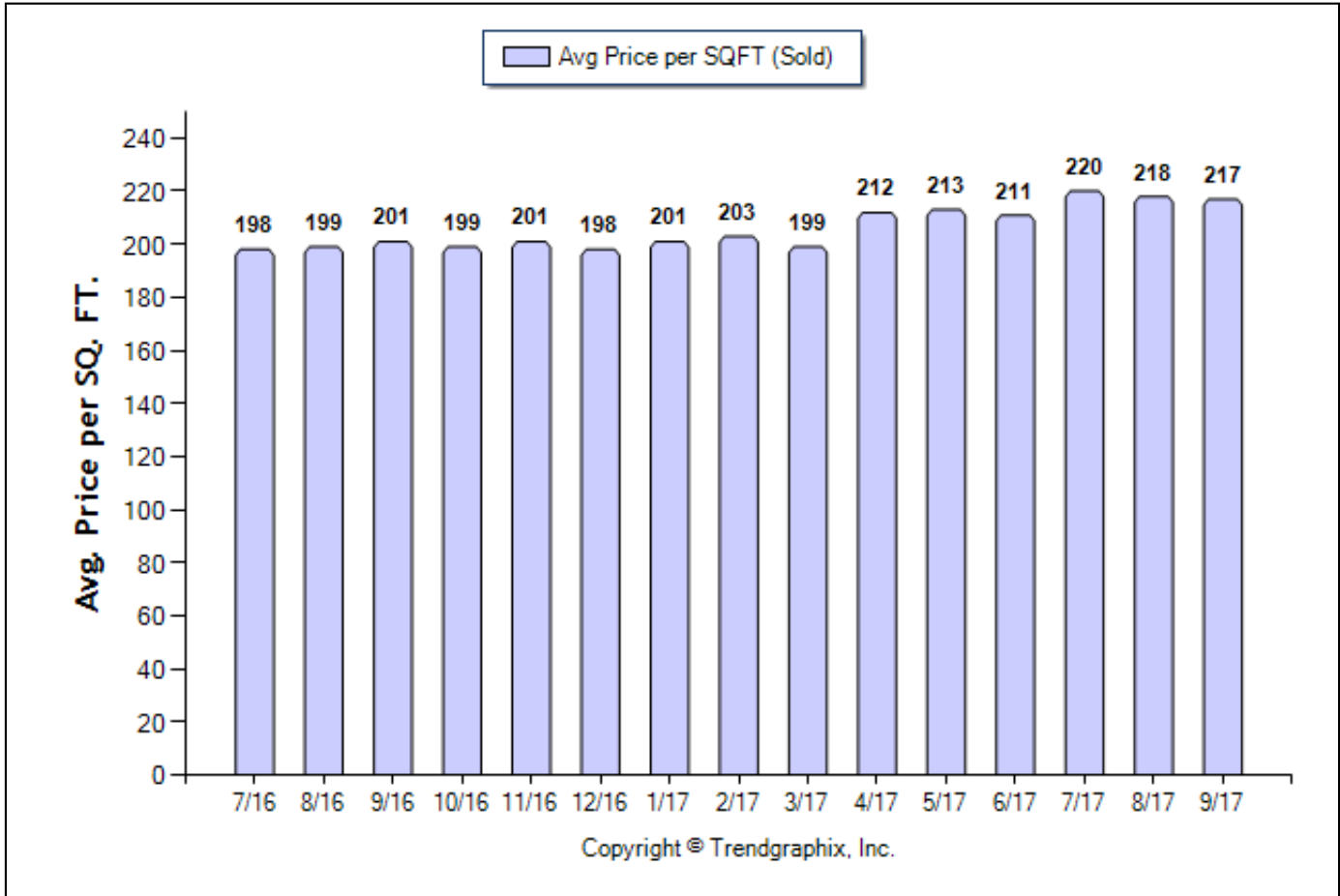
**SQFT Range:** 0 - No Limit

**Bedrooms:** 0 - No Limit

**Baths:** 0 - No Limit

**Year Built:** 0 - No Limit

**Average Price per SQFT (Sold) (Jul. 2016 - Sep. 2017)**



	Curnt vs. Prev Month			Curnt vs. Same Month 1 Yr Ago			Curnt vs. Same Qtr 1 Yr Ago		
	Sep. 17	Aug. 17	% Change	Sep. 17	Sep. 16	% Change	Jul. 17 to Sep. 17	Jul. 16 to Sep. 16	% Change
Avg. Sq. Ft. Price (Sold)	217	218	0.5% ▼	217	201	8% ▲	218.39	199.34	9.6% ▲

Date	7/16	8/16	9/16	10/16	11/16	12/16	1/17	2/17	3/17	4/17	5/17	6/17	7/17	8/17	9/17
For Sale	1780	1790	1706	1529	1380	1201	1015	983	1098	1246	1451	1675	1794	1841	1829
New Listing	712	680	519	454	346	224	257	396	708	709	861	871	695	726	625
Sold	524	566	538	486	480	442	303	276	380	443	500	597	562	565	488
Pended	550	541	456	488	352	294	319	360	523	505	576	526	546	512	519
Months of Inventory (Closed Sales)	3.4	3.2	3.2	3.1	2.9	2.7	3.3	3.6	2.9	2.8	2.9	2.8	3.2	3.3	3.7
Months of Inventory (Pended Sales)	3.2	3.3	3.7	3.1	3.9	4.1	3.2	2.7	2.1	2.5	2.5	3.2	3.3	3.6	3.5
Absorption Rate (Closed Sales) %	29.4	31.6	31.5	31.8	34.8	36.8	29.9	28.1	34.6	35.6	34.5	35.6	31.3	30.7	26.7
Absorption Rate (Pended Sales) %	30.9	30.2	26.7	31.9	25.5	24.5	31.4	36.6	47.6	40.5	39.7	31.4	30.4	27.8	28.4
Avg. Active Price	585	590	584	585	576	583	580	585	590	597	605	612	616	603	588
Avg. Sold Price	377	378	379	372	396	374	392	389	389	429	403	401	417	421	427
Avg. Sq. Ft. Price (Sold)	198	199	201	199	201	198	201	203	199	212	213	211	220	218	217
Sold/List Diff. %	98	98	99	98	98	98	98	98	98	98	99	99	99	99	98
Sold/Orig LP Diff. %	97	96	96	96	95	95	95	95	96	97	98	97	98	97	96
Days on Market	107	107	119	121	125	124	138	143	133	117	113	104	104	104	103
Median	334	324	330	332	328	321	340	323	338	360	347	350	350	365	370

All reports are published October 2017, based on data available at the end of September 2017. All reports presented are based on data supplied by the Central Oregon MLS. Neither the Association nor its MLS guarantees or is in anyway responsible for its accuracy. Data maintained by the Association or its MLS may not reflect all real estate activities in the market. Information deemed reliable but not guaranteed.

Location: Deschutes County

Property Types: All Residential Prop - All Property Statuses - All Lot Sizes

Price Range: \$0 - No Limit

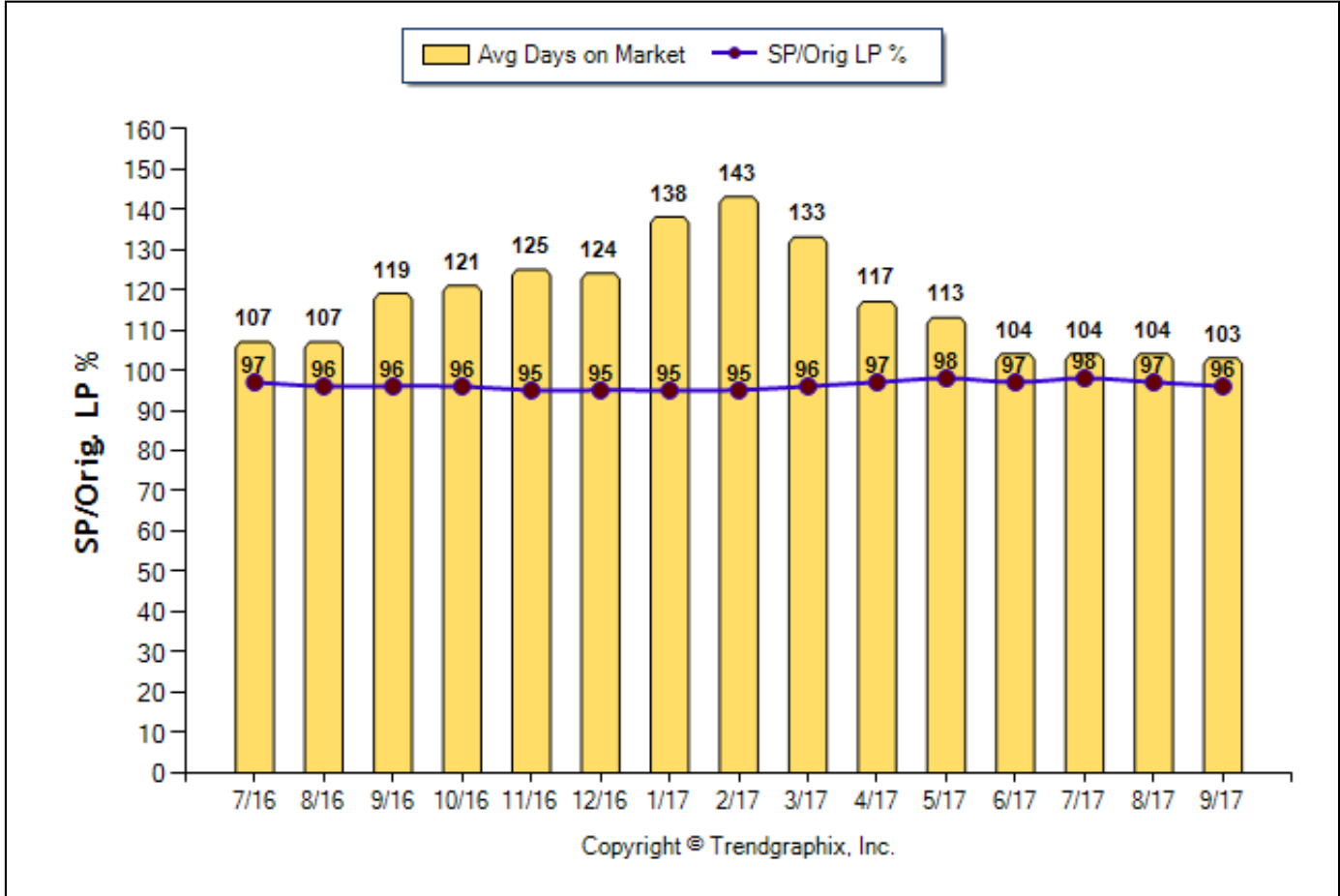
SQFT Range: 0 - No Limit

Bedrooms: 0 - No Limit

Baths: 0 - No Limit

Year Built: 0 - No Limit

**Avg Days On Market & SP/Orig LP % (Jul. 2016 - Sep. 2017)**



	Curnt vs. Prev Month			Curnt vs. Same Month 1 Yr Ago			Curnt vs. Same Qtr 1 Yr Ago		
	Sep. 17	Aug. 17	% Change	Sep. 17	Sep. 16	% Change	Jul. 17 to Sep. 17	Jul. 16 to Sep. 16	% Change
Days on Market	103	104	-1% ▼	103	119	-13.4% ▼	104	111	-6.3% ▼
Sold/Orig LP Diff. %	96	97	-1% ▼	96	96	0%	97	96	1% ▲

Date	7/16	8/16	9/16	10/16	11/16	12/16	1/17	2/17	3/17	4/17	5/17	6/17	7/17	8/17	9/17
<b>For Sale</b>	1780	1790	1706	1529	1380	1201	1015	983	1098	1246	1451	1675	1794	1841	1829
<b>New Listing</b>	712	680	519	454	346	224	257	396	708	709	861	871	695	726	625
<b>Sold</b>	524	566	538	486	480	442	303	276	380	443	500	597	562	565	488
<b>Pended</b>	550	541	456	488	352	294	319	360	523	505	576	526	546	512	519
<b>Months of Inventory (Closed Sales)</b>	3.4	3.2	3.2	3.1	2.9	2.7	3.3	3.6	2.9	2.8	2.9	2.8	3.2	3.3	3.7
<b>Months of Inventory (Pended Sales)</b>	3.2	3.3	3.7	3.1	3.9	4.1	3.2	2.7	2.1	2.5	2.5	3.2	3.3	3.6	3.5
<b>Absorption Rate (Closed Sales) %</b>	29.4	31.6	31.5	31.8	34.8	36.8	29.9	28.1	34.6	35.6	34.5	35.6	31.3	30.7	26.7
<b>Absorption Rate (Pended Sales) %</b>	30.9	30.2	26.7	31.9	25.5	24.5	31.4	36.6	47.6	40.5	39.7	31.4	30.4	27.8	28.4
<b>Avg. Active Price</b>	585	590	584	585	576	583	580	585	590	597	605	612	616	603	588
<b>Avg. Sold Price</b>	377	378	379	372	396	374	392	389	389	429	403	401	417	421	427
<b>Avg. Sq. Ft. Price (Sold)</b>	198	199	201	199	201	198	201	203	199	212	213	211	220	218	217
<b>Sold/List Diff. %</b>	98	98	99	98	98	98	98	98	98	98	99	99	99	99	98
<b>Sold/Orig LP Diff. %</b>	97	96	96	96	95	95	95	95	96	97	98	97	98	97	96
<b>Days on Market</b>	107	107	119	121	125	124	138	143	133	117	113	104	104	104	103
<b>Median</b>	334	324	330	332	328	321	340	323	338	360	347	350	350	365	370

All reports are published October 2017, based on data available at the end of September 2017. All reports presented are based on data supplied by the Central Oregon MLS. Neither the Association nor its MLS guarantees or is in anyway responsible for its accuracy. Data maintained by the Association or its MLS may not reflect all real estate activities in the market. Information deemed reliable but not guaranteed.

**Location:** Deschutes County

**Property Types:** All Residential Prop - All Property Statuses - All Lot Sizes

**Price Range:** \$0 - No Limit

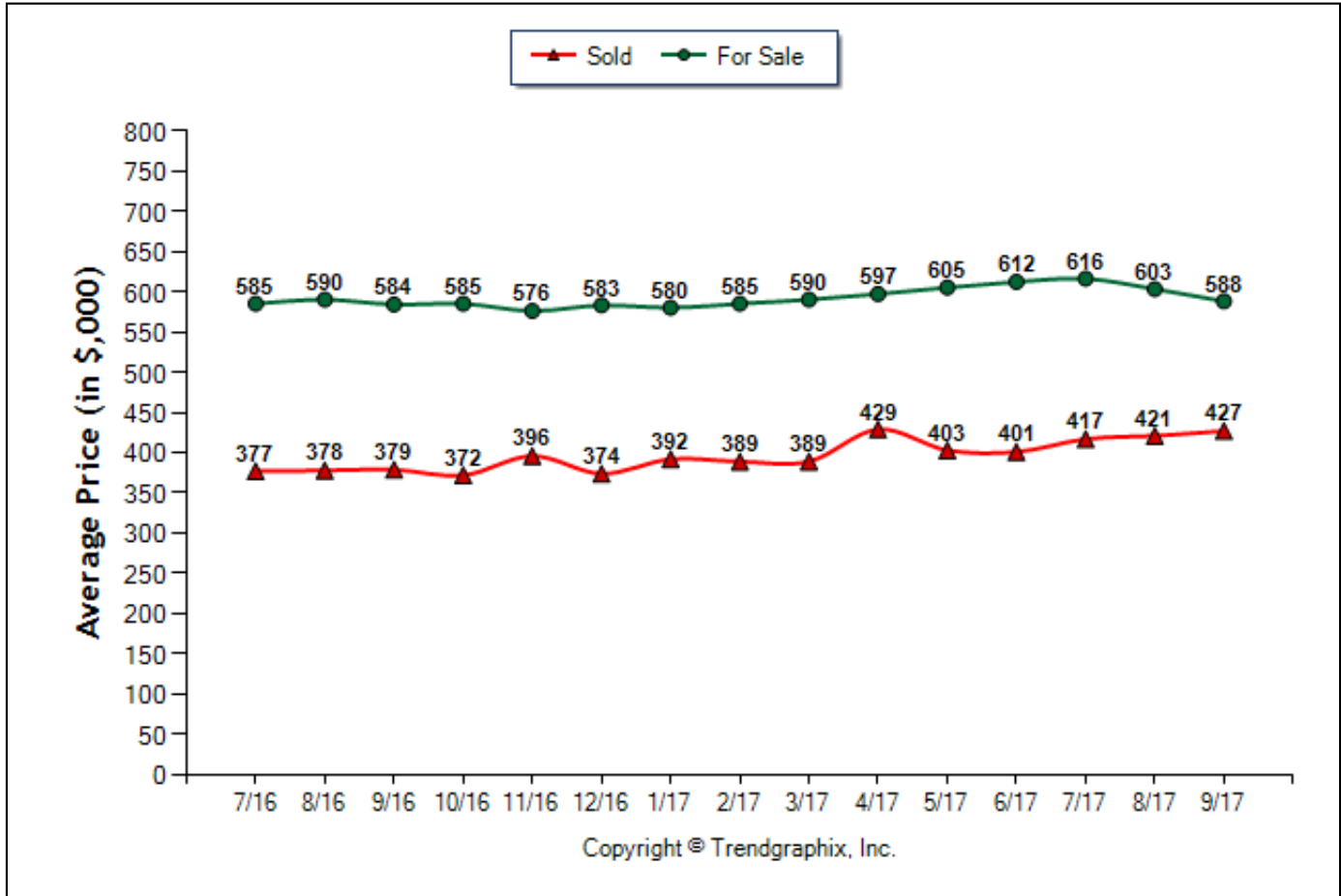
**SQFT Range:** 0 - No Limit

**Bedrooms:** 0 - No Limit

**Baths:** 0 - No Limit

**Year Built:** 0 - No Limit

**Average Price of For Sale and Sold (Jul. 2016 - Sep. 2017)**



	Curnt vs. Prev Month			Curnt vs. Same Month 1 Yr Ago			Curnt vs. Same Qtr 1 Yr Ago		
	Sep. 17	Aug. 17	% Change	Sep. 17	Sep. 16	% Change	Jul. 17 to Sep. 17	Jul. 16 to Sep. 16	% Change
Avg. Active Price	588	603	-2.5% ▼	588	584	0.7% ▲	602	586	2.7% ▲
Avg. Sold Price	427	421	1.4% ▲	427	379	12.7% ▲	421	378	11.4% ▲

Date	7/16	8/16	9/16	10/16	11/16	12/16	1/17	2/17	3/17	4/17	5/17	6/17	7/17	8/17	9/17
<b>For Sale</b>	1780	1790	1706	1529	1380	1201	1015	983	1098	1246	1451	1675	1794	1841	1829
<b>New Listing</b>	712	680	519	454	346	224	257	396	708	709	861	871	695	726	625
<b>Sold</b>	524	566	538	486	480	442	303	276	380	443	500	597	562	565	488
<b>Pended</b>	550	541	456	488	352	294	319	360	523	505	576	526	546	512	519
<b>Months of Inventory (Closed Sales)</b>	3.4	3.2	3.2	3.1	2.9	2.7	3.3	3.6	2.9	2.8	2.9	2.8	3.2	3.3	3.7
<b>Months of Inventory (Pended Sales)</b>	3.2	3.3	3.7	3.1	3.9	4.1	3.2	2.7	2.1	2.5	2.5	3.2	3.3	3.6	3.5
<b>Absorption Rate (Closed Sales) %</b>	29.4	31.6	31.5	31.8	34.8	36.8	29.9	28.1	34.6	35.6	34.5	35.6	31.3	30.7	26.7
<b>Absorption Rate (Pended Sales) %</b>	30.9	30.2	26.7	31.9	25.5	24.5	31.4	36.6	47.6	40.5	39.7	31.4	30.4	27.8	28.4
<b>Avg. Active Price</b>	585	590	584	585	576	583	580	585	590	597	605	612	616	603	588
<b>Avg. Sold Price</b>	377	378	379	372	396	374	392	389	389	429	403	401	417	421	427
<b>Avg. Sq. Ft. Price (Sold)</b>	198	199	201	199	201	198	201	203	199	212	213	211	220	218	217
<b>Sold/List Diff. %</b>	98	98	99	98	98	98	98	98	98	98	99	99	99	99	98
<b>Sold/Orig LP Diff. %</b>	97	96	96	96	95	95	95	95	96	97	98	97	98	97	96
<b>Days on Market</b>	107	107	119	121	125	124	138	143	133	117	113	104	104	104	103
<b>Median</b>	334	324	330	332	328	321	340	323	338	360	347	350	350	365	370

All reports are published October 2017, based on data available at the end of September 2017. All reports presented are based on data supplied by the Central Oregon MLS. Neither the Association nor its MLS guarantees or is in anyway responsible for its accuracy. Data maintained by the Association or its MLS may not reflect all real estate activities in the market. Information deemed reliable but not guaranteed.

**Location:** Deschutes County

**Property Types:** All Residential Prop - All Property Statuses - All Lot Sizes

**Price Range:** \$0 - No Limit

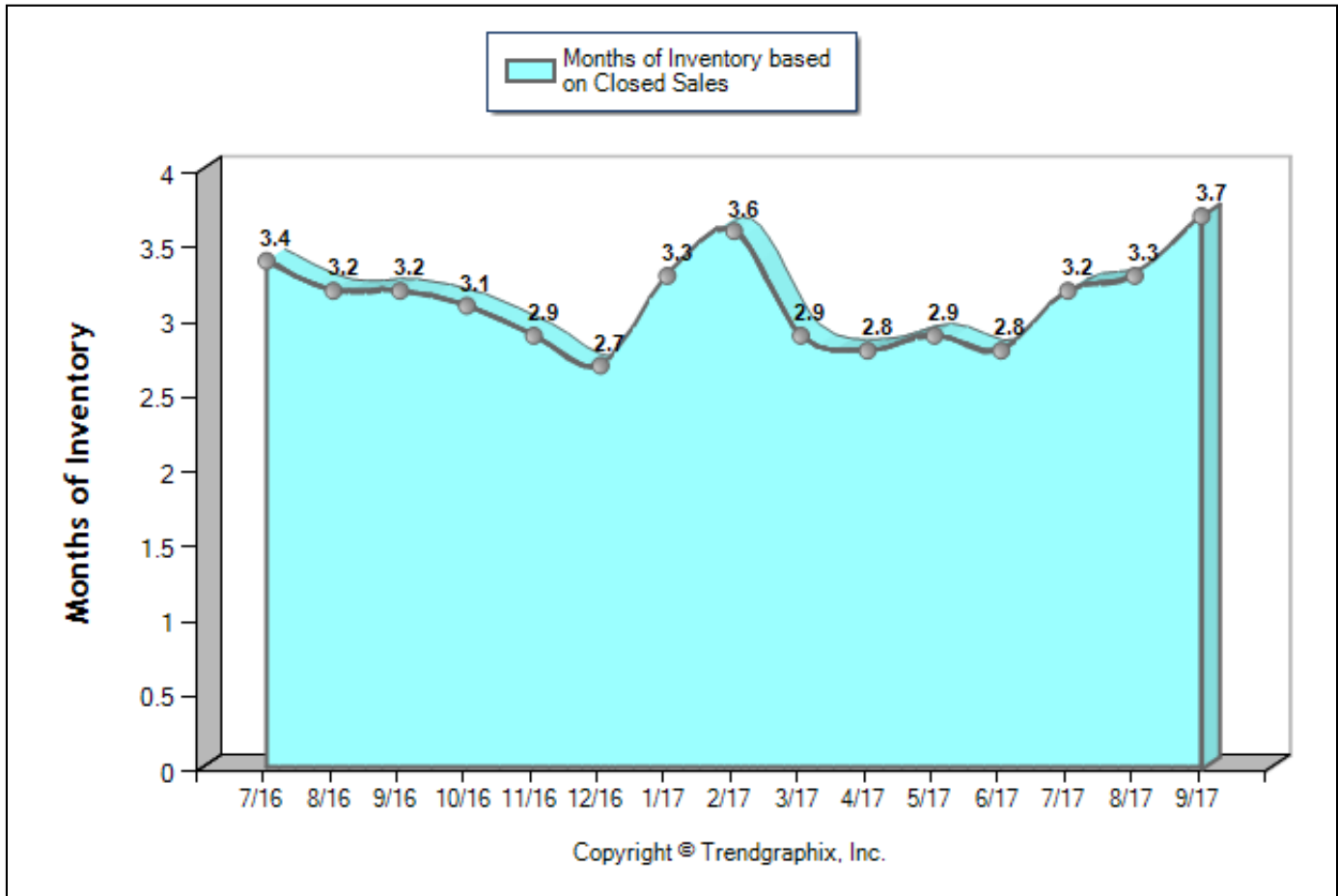
**SQFT Range:** 0 - No Limit

**Bedrooms:** 0 - No Limit

**Baths:** 0 - No Limit

**Year Built:** 0 - No Limit

**Months of Inventory Based on Closed Sales (Jul. 2016 - Sep. 2017)**



	Curnt vs. Prev Month			Curnt vs. Same Month 1 Yr Ago			Curnt vs. Same Qtr 1 Yr Ago		
	Sep. 17	Aug. 17	% Change	Sep. 17	Sep. 16	% Change	Jul. 17 to Sep. 17	Jul. 16 to Sep. 16	% Change
Months of Inventory (Closed Sales)	3.7	3.3	12.3% ▲	3.7	3.2	15.8% ▲	3.4	3.2	6.2% ▲

Date	7/16	8/16	9/16	10/16	11/16	12/16	1/17	2/17	3/17	4/17	5/17	6/17	7/17	8/17	9/17
For Sale	1780	1790	1706	1529	1380	1201	1015	983	1098	1246	1451	1675	1794	1841	1829
New Listing	712	680	519	454	346	224	257	396	708	709	861	871	695	726	625
Sold	524	566	538	486	480	442	303	276	380	443	500	597	562	565	488
Pended	550	541	456	488	352	294	319	360	523	505	576	526	546	512	519
Months of Inventory (Closed Sales)	3.4	3.2	3.2	3.1	2.9	2.7	3.3	3.6	2.9	2.8	2.9	2.8	3.2	3.3	3.7
Months of Inventory (Pended Sales)	3.2	3.3	3.7	3.1	3.9	4.1	3.2	2.7	2.1	2.5	2.5	3.2	3.3	3.6	3.5
Absorption Rate (Closed Sales) %	29.4	31.6	31.5	31.8	34.8	36.8	29.9	28.1	34.6	35.6	34.5	35.6	31.3	30.7	26.7
Absorption Rate (Pended Sales) %	30.9	30.2	26.7	31.9	25.5	24.5	31.4	36.6	47.6	40.5	39.7	31.4	30.4	27.8	28.4
Avg. Active Price	585	590	584	585	576	583	580	585	590	597	605	612	616	603	588
Avg. Sold Price	377	378	379	372	396	374	392	389	389	429	403	401	417	421	427
Avg. Sq. Ft. Price (Sold)	198	199	201	199	201	198	201	203	199	212	213	211	220	218	217
Sold/List Diff. %	98	98	99	98	98	98	98	98	98	98	99	99	99	99	98
Sold/Orig LP Diff. %	97	96	96	96	95	95	95	95	96	97	98	97	98	97	96
Days on Market	107	107	119	121	125	124	138	143	133	117	113	104	104	104	103
Median	334	324	330	332	328	321	340	323	338	360	347	350	350	365	370

All reports are published October 2017, based on data available at the end of September 2017. All reports presented are based on data supplied by the Central Oregon MLS. Neither the Association nor its MLS guarantees or is in anyway responsible for its accuracy. Data maintained by the Association or its MLS may not reflect all real estate activities in the market. Information deemed reliable but not guaranteed.